



# ClearScan™ CT

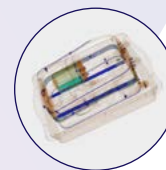
## ENHANCED THREAT DETECTION ALGORITHMS

**Combining ClearScan high-throughput explosive detection with SeeTrue AI for next-generation detection of prohibited items and contraband.**

Leidos' ClearScan cabin baggage Explosives Detection System (EDS) leverages cutting-edge dual-energy CT technology and advanced explosive detection algorithms to identify solid, liquid, and sheet explosives, including homemade explosives (HMEs), with industry-leading accuracy and a low false alarm rate. With SeeTrue AI integrated, ClearScan delivers enhanced capabilities, automatically detecting prohibited items and contraband, while maintaining a seamless passenger experience.

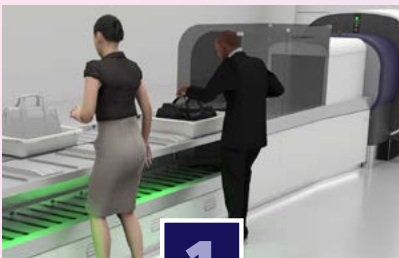
This integrated solution is designed for deployment across airport checkpoints and screening lanes serving airport customs, border control agencies, and anti-narcotics units. It enables fast and accurate screening without compromising passenger convenience, supporting both security and operational goals.

**ClearScan CT** upgraded with integrated algorithms.



Images with Threats Detected

## HOW IT WORKS



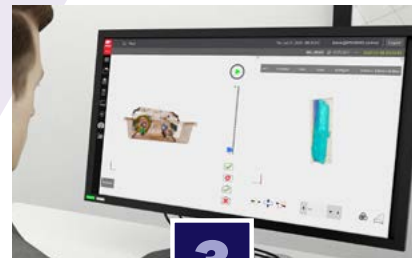
**1**

Passengers place their carry-on bags in trays at the ProPassage divest station.



**2**

Baggage is then scanned by the ClearScan CT scanner powered by the enhanced threat detection algorithms.



**3**

Scanned images are viewed by security personnel at the lane or remotely.

# Full Automation with EDS & Prohibited Items Detection

## ClearScan with SeeTrue's AI algorithms provide:

- **Image on Alarm Support** - Automatically and randomly selects a percentage of bags cleared by multiple algorithms and routes to passengers, bypassing a manual image review. All bags with alarms receive a manual review from a security officer.
- **Advanced CONOPS** - Resolve prohibited items (PI) alarms at the primary screening stage, streamlining threat response.
- **Auto-Reject Options** - Automatically divert flagged bags based on configurable threat profiles.
- **Reduced Operator Workload** - Improve throughput and efficiency by minimizing manual alarm resolution.
- **Regulation-Ready** - Designed to meet evolving global standards requirements for explosives detection systems for cabin baggage (EDSCB) and automated prohibited items detection (APIDS).

## Advanced Contraband Detection

With SeeTrue AI onboard, ClearScan detects a broader range of threats beyond explosives and weapons, helping airports and customs and border control agencies intercept contraband and illicit goods with greater speed and precision.

- **Pills** (i.e. methamphetamine) - Detects various forms of pills
- **Narcotics** (i.e. cocaine) - Detects both block and powdered forms of substances.
- **Currency** (i.e. paper) - Detects stacks and rolls of cash

## Why Choose Leidos + SeeTrue?

- **Seamless Integration** - AI-powered detection layered directly on ClearScan's CT imaging
- **Proven Performance** - Deployed globally and trusted by top-tier security agencies



[leidos.com](https://leidos.com)